

Y | exposed element for thermostatic shower/bath mixer for concealed installation

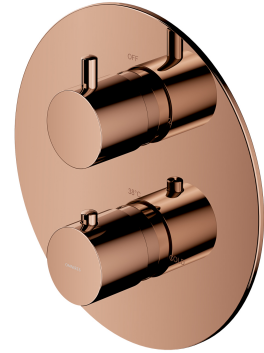
Finish: polished copper (CP)

The OMNIRES Y collection thrills with its simple line and an impeccable form which expresses the passion in pursuit for the ideal. The design has been inspired by and based on the shape of a circle. Its timeless and perfectly refined design, created in the spirit of minimalism, offers the maximum of interior design options.

To complete the shower/bath mixer, it is necessary to additionally purchase the built-in element: BOXTE2F, equipped with a brass body and a high-quality thermostatic cartridge.

Copper is a sophisticated finish with a warm red-brown hue and a perfectly smooth, lustrous surface. The product is coated using advanced PVD technology.

Design: Janusz Langner, OMNIRES Studio



Technologies



The product is coated using the advanced PVD technology which guarantees the highest possible durability and facilitates cleaning.



The mixer's body is made of high quality A-grade brass.

Flow characteristics

- hot water supply: max. 90 °C
- working pressure 1-10 bar

Specification

- rosette dimensions: $\varnothing 20$ cm
- complementary product to built-in part BOXTE2F

