

CONTOUR | thermostatic shower/bath mixer for concealed installation

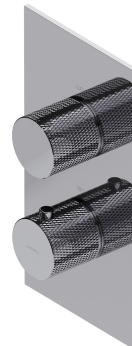
Finish: chrome (CR)

The OMNIRES CONTOUR collection intrigues with its extravagant form and decorative details. An austere, architectural design with a diamond milling marvels with the sophisticated combination of textures and perfect workmanship.

Made of high grade brass, the mixer is equipped with a superior quality thermostatic cartridge.

Chrome is a versatile finishing in a silvery colour, with the perfectly even and lustrous surface.

Design: Paulina Shacalis, OMNIRES Studio
Awards: Red Dot Design Award, Must Have
Distinctions: Dobry Wzór



Technologies



The mixer is equipped with the highest quality thermostatic cartridge incorporating a 38°C lock. The cartridge protects against sudden temperature changes and guarantees long term product performance.



The product is coated using the advanced electroplating technology which guarantees durability, offers good resistance to mechanical damage and facilitates cleaning.



The mixer's body, the valve and the rosette are all made of high quality A-grade brass.



Dziesięć lat gwarancji na szczelność korpusu w bateriach łazienkowych.

Flow characteristics

- hot water supply: max. 90 °C
- working pressure 1-6 bar

Specification

- rosette dimensions: 12 x 22 cm
- minimum wall depth: 8.5 cm
- two 3/4" inlets (hot and cold water), two 1/2" outlets for mixed water
- built-in parts included

