

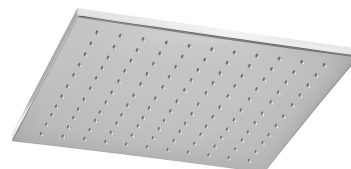
## SLIMLINE | shower head, 30 x 30 cm

---

Finish: polished chrome (CR)

Shower head internally lined with rubber offering additional protection against damage.

Certificates: Polish Declaration of Performance (B marking), Polish Hygienic Certificate PZH



## Technologies

---



The shower head is made using the ANTI-SCALE technology. It incorporates a silicone insert that prevents internal water stagnation. Occasional tilting of the shower head, so that any stagnant water could flow out through the nozzles, guarantees long term product performance.



The product's coating, made using advanced galvanization technology, is durable and easy to clean.



The EASY CLEAN nozzles allow the user to easily remove any limescale build up by simply wiping their silicone surface.



The product is made of high quality A-grade brass.

## Flow characteristics

---

- water flow at 3 bar: 22 l/min
- working pressure 1-5 bar
- noise class: U

## Specification

---

- brass
- dimensions: 30 x 30 cm, thickness: 0.9 cm
- 1-function
- 1/2" water connection
- flow rate: ~22 l/min.

## Product care

---

### How to take care of a shower head?

Remember to regularly wipe the silicone nozzles with your hand to remove any limescale deposits that might be forming on their surface. Avoid using harsh cleaning agents that may damage the nozzles and the surface of the shower head.

The shower head should be angled after each use to allow the remaining water to flow out. This is the easiest yet necessary way to reduce the build-up of limescale from the water inside the shower head. Tilting the shower head additionally reduces the risk of the product becoming prone to leaking, allowing the product to serve its purpose reliably for an extended time.

