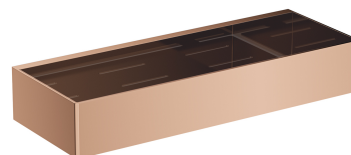


UNI | shower basket, 30 x 5 x 11 cm

Finish: copper (CP)

A shower basket made of high-quality stainless steel. Its simple design, with precisely engineered drainage holes at the bottom, ensures quick water removal and easy cleaning, while the universal style allows for seamless integration with products from other bathroom accessory collections.



Technologies



Fittings and accessories made of high quality stainless steel are characterized by exceptional resistance to damage and long term product performance.



The product is coated using the advanced PVD technology which guarantees highest possible durability, offers exceptional resistance to damage and facilitates cleaning.

Specification

- stainless steel
- width: 30 cm, height: 5 cm, depth: 11 cm

