

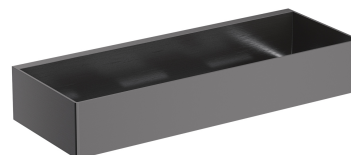
## UNI | shower basket, 30 x 5 x 11 cm

---

### Finish: brushed anthracite (AT)

A shower basket made of high-quality stainless steel. Its simple design, with precisely engineered drainage holes at the bottom, ensures quick water removal and easy cleaning, while the universal style allows for seamless integration with products from other bathroom accessory collections.

Anthracite is a modern finishing in a deep metallic shade, with a satin, brushed surface. The product is coated using the advanced PVD technology.



## Technologies

---



Fittings and accessories made of high-quality stainless steel are characterized by their perfectly crafted design and exceptional resistance to damage, preserving their appearance even after years of use.



The product is coated using the advanced PVD technology which guarantees the highest possible durability and facilitates cleaning.

## Specification

---

- stainless steel
- width: 30 cm, height: 5 cm, depth: 11 cm

