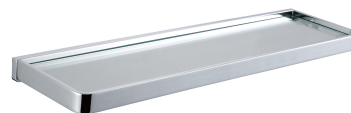


LUGANO | shelf, 50 cm

Finish: chrome (CR)

LUGANO accessories collection displays a modern and versatile style. A distinctive line and a strong form give the collection its expressive look.

Chrome is a versatile finishing in a silvery colour, with the perfectly even and lustrous surface.



Technologies



The product is coated using the advanced electroplating technology which guarantees durability, offers good resistance to mechanical damage and facilitates cleaning.



The product is made of high quality A-grade brass.

Specification

- brass and glass
- width: 50 cm, height: 3 cm, distance from the wall: 14 cm

