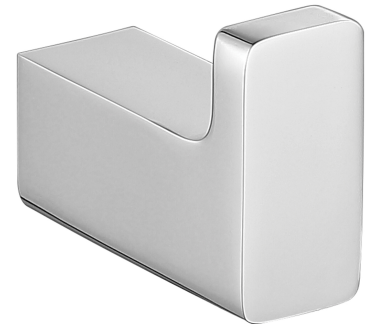


NELSON | hook

Finish: polished chrome (CR)

NELSON accessories collection stands out thanks to its modern geometric form and a friendly and gentle line. The design is based on right angles, softened with a streamlined shape of gently rounded edges.

Chrome is a versatile finishing in a silvery colour, with the perfectly even and lustrous surface.



Technologies



The product's coating, made using advanced galvanization technology, is durable and easy to clean.



The product is made of high quality A-grade brass.

Specification

- brass
- width: 2 cm
- height: 3 cm
- distance from the wall: 4 cm

