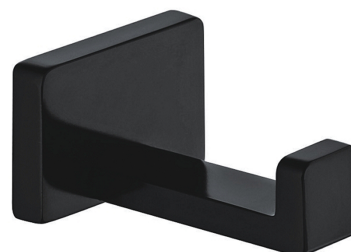


DARLING | hook

Finish: black (BLH)

DARLING accessories collection delights with an impeccable design and its perfect workmanship. It owes its unique character to a precisely defined silhouette with a distinctive line softened by subtle curves.

Black is an expressive, dark finishing, with a perfectly smooth, satin surface.



Technologies



The product is made of high quality A-grade brass.

Specification

- brass
- width: 5 cm, height: 3 cm, distance from the wall: 6 cm

