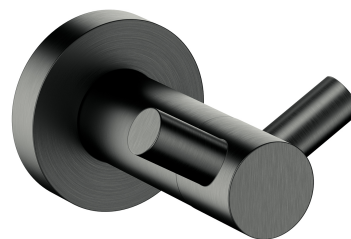


MODERN PROJECT | double hook

Finish: brushed graphite (GR)

MODERN PROJECT accessories collection has a solid clean form and minimalist design. The perfectly defined, circle-based shapes give the collection a timeless and modern look.

Graphite is an intriguing finishing in the shade of metallic grey, with a satin, brushed surface.



Technologies



The product is made of high quality A-grade brass.

Specification

- brass
- width: 6 cm, height: 4 cm, distance from the wall: 7 cm

