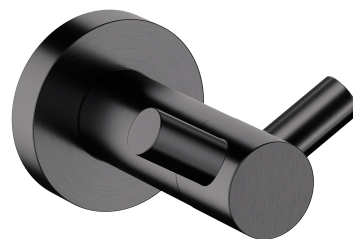


MODERN PROJECT | double hook

Finish: brushed anthracite (AT)

MODERN PROJECT accessories collection has a solid clean form and minimalist design. The perfectly defined, circle-based shapes give the collection a timeless and modern look.

Anthracite is a modern finishing in a deep metallic shade, with a satin, brushed surface. The product is coated using the advanced PVD technology.



Technologies



The product is coated using the advanced PVD technology which guarantees the highest possible durability and facilitates cleaning.



The product is made of high quality A-grade brass.

Specification

- brass
- width: 6 cm, height: 4 cm, distance from the wall: 7 cm

