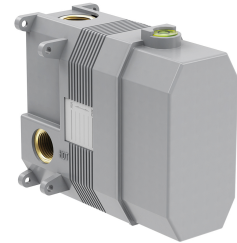


BOX | Built-in part for shower/bath mixer for concealed installation

The built-in part is equipped with a brass body and a high-quality ceramic cartridge. Its advantages include easy installation and a minimum installation depth of just 5.5 cm. The BOX is designed to be paired with exposed elements: Y1235ROBSB, Y1235ROGL, Y1235ROGLB, Y1235ROCP, Y1235ROCPB, Y1235ROGR, Y1235RONI, Y1235ROBL, Y1235ROCR, Y1235ROWM.

Certificates: Polish Hygienic Certificate PZH



Technologies



The mixer is equipped with the highest quality ceramic cartridge which ensures smooth and precise water flow control whilst guaranteeing long term product performance.

Flow characteristics

- water flow at 3 bar: 22 l/min
- hot water supply: max. 90 °C
- working pressure 1-5 bar

Specification

- minimum wall depth: 5.5 cm
- two 1/2" inlets (hot and cold water)
- two mixed water outlets: 1/2" and 3/4"
- ceramic cartridge: ø40 mm
- complementary product to: Y1235ROBSB, Y1235ROGL, Y1235ROGLB, Y1235ROCP, Y1235ROCPB, Y1235ROGR, Y1235RONI, Y1235ROBL, Y1235ROCR, Y1235ROWM

Product care

How to take care of bathroom and kitchen fittings?

You should clean your bathroom and kitchen fittings regularly, preferably after each use, so as to prevent the build-up of hard-to-remove dirt. For daily maintenance of external surfaces, use a soft cloth (for example, a microfibre cloth) and a solution of water with a mild cleaning agent with a natural composition, then rinse the product thoroughly with clean water and wipe it dry. It is not recommended to use rough or abrasive materials and corrosive or bleaching substances to prevent damaging the surface of the product.

For more stubborn dirt, use a 10% citric acid solution with water. Apply this solution directly to the product or cover the product with a cloth soaked in the solution. After 10 minutes, rinse the product thoroughly with clean water and wipe it dry. If necessary, the

process can be repeated.

