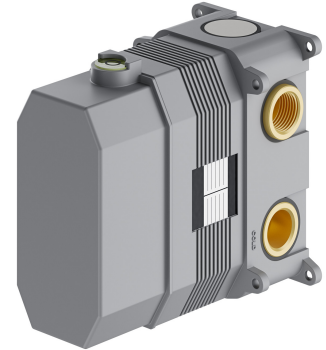


## BOX | built-in part for 2-way shower mixer

---

The built-in part is equipped with a brass body and a high-quality ceramic cartridge. Its advantages include easy installation and a minimum installation depth of just 5.8 cm. The BOX is designed to be paired with exposed elements: Y1247ROBL, Y1247ROBSB, Y1247ROCP, Y1247ROCPB, Y1247ROCR, Y1247ROGL, Y1247ROGLB, Y1247ROGR, Y1247RONI, Y1247ROWM.

Certificates: Polish Declaration of Performance (B marking), Polish Hygienic Certificate PZH



## Technologies

---



The mixer is equipped with the highest quality ceramic cartridge which ensures smooth and precise water flow control whilst guaranteeing long term product performance.

## Flow characteristics

---

- water flow at 3 bar: 17,9 l/min, 19,7 l/min
- working pressure 1-5 bar
- hot water supply: max. 90 °C
- acoustic group: U/U

## Specification

---

- minimum wall depth: 5.8 cm
- two 1/2" inlets (hot and cold water)
- two mixed water outlets: 1/2"
- ceramic cartridge: ø40 mm
- complementary product to: Y1247ROBL, Y1247ROBSB, Y1247ROCP, Y1247ROCPB, Y1247ROCR, Y1247ROGL, Y1247ROGLB, Y1247ROGR, Y1247RONI, Y1247ROWM

