

PARMA | bath mixer

Finish: polished chrome (CR)

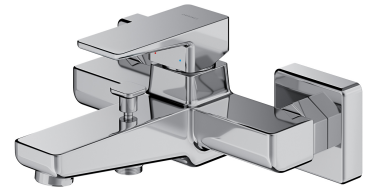
The OMNIRES PARMA collection stands out with its minimalist, elegant design. A well-balanced form with rounded edges proves light and subtle. Well thought-out solutions give the collection a timeless character.

Made of high grade brass, the mixer is equipped with a superior quality ceramic cartridge.

Chrome is a versatile finishing in a silvery colour, with the perfectly even and lustrous surface.

Design: Janusz Langner, OMNIRES Studio

Certificates: Polish Declaration of Performance (B marking), Polish Hygienic Certificate PZH



Technologies



The mixer is equipped with the highest quality ceramic cartridge which ensures smooth and precise water flow control whilst guaranteeing long term product performance.



The product's coating, made using advanced galvanization technology, is durable and easy to clean.



The mixer's body is made of high quality A-grade brass.

Flow characteristics

- water flow at 3 bar: 20 l/min
- hot water supply: max. 90 °C
- working pressure 1-5 bar
- noise class: II/II

Specification

- spout reach: 18.8 cm

Product care

How to take care of bathroom and kitchen fittings?

You should clean your bathroom and kitchen fittings regularly, preferably after each use, so as to prevent the build-up of hard-to-remove dirt. For daily maintenance of external surfaces, use a soft cloth (for example, a microfibre cloth) and a solution of water with a mild cleaning agent with a natural composition, then rinse the product thoroughly with clean water and wipe it dry. It is not recommended to use rough or abrasive materials and corrosive or bleaching substances to prevent damaging the surface of the product.

For more stubborn dirt, use a 10% citric acid solution with water. Apply this solution directly to the product or cover the product with a cloth soaked in the solution. After 10 minutes, rinse the product thoroughly with clean water and wipe it dry. If necessary, the process can be repeated.

What is the best method for cleaning the aerator?

Remember to regularly control the flow of water through the aerator so as to ensure its problem-free operation and protect it from damage. In the case of small contaminants in the water or "hard" water, remove the aerator once every few weeks and clean it with a brush. In the case of more stubborn dirt, we recommend soaking the aerator for 10 minutes in a 10% citric acid solution with water.

