

## CONTOUR | basin mixer for concealed installation

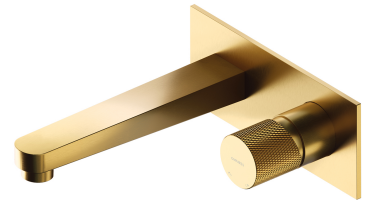
---

### Finish: brushed gold (GLB)

The OMNIRES CONTOUR collection intrigues with its extravagant form and decorative details. An austere, architectural design with a diamond milling marvels with the sophisticated combination of textures and perfect workmanship.

Made of high grade brass, the mixer is equipped with a superior quality ceramic cartridge. Innovative technological solutions reduce water consumption by 50% while offering comfort and ease of use.

Brushed gold is a noble finishing in an elegant shade, with a contemporary, satin surface. The product is coated using the advanced PVD technology.



Design: Paulina Shacalis, OMNIRES Studio  
Awards: Red Dot Design Award, Must Have  
Distinctions: Dobry Wzór

Certificates: Polish Declaration of Performance (B marking)

## Technologies

---



The mixer is equipped with the highest quality ceramic cartridge which ensures smooth and precise water flow control whilst guaranteeing long term product performance.



The ECO WATER technology minimizes environmental footprint by reducing the water consumption by approx. 50%, without compromising on the overall product experience.



Thanks to the AIR WATER technology, the water is soft and pleasant to the touch. The stream does not spray and it is quiet and consistent, even if any variations in water pressure occur.



The EASY CLEAN aerator allows the user to easily remove any limescale build up by simply wiping its silicone surface.



The product is coated using the advanced PVD technology which guarantees the highest possible durability and facilitates cleaning.



The mixer's body, the valve and the rosette are all made of high quality A-grade brass.

## Flow characteristics

---

- hot water supply: max. 90 °C
- working pressure 1-5 bar
- noise class: I

## Specification

---

- rosette dimensions: 19 x 8 cm
- spout reach: 18.5 cm
- minimum wall depth: 5 cm
- built-in parts included

## Product care

---

### How to take care of bathroom and kitchen fittings?

You should clean your bathroom and kitchen fittings regularly, preferably after each use, so as to prevent the build-up of hard-to-remove dirt. For daily maintenance of external surfaces, use a soft cloth (for example, a microfibre cloth) and a solution of water with a mild cleaning agent with a natural composition, then rinse the product thoroughly with clean water and wipe it dry. It is not recommended to use rough or abrasive materials and corrosive or bleaching substances to prevent damaging the surface of the product.

For more stubborn dirt, use a 10% citric acid solution with water. Apply this solution directly to the product or cover the product with a cloth soaked in the solution. After 10 minutes, rinse the product thoroughly with clean water and wipe it dry. If necessary, the process can be repeated.

### What is the best method for cleaning the aerator?

Remember to regularly control the flow of water through the aerator so as to ensure its problem-free operation and protect it from damage. In the case of small contaminants in the water or "hard" water, remove the aerator once every few weeks and clean it with a brush. In the case of more stubborn dirt, we recommend soaking the aerator for 10 minutes in a 10% citric acid solution with water.

