

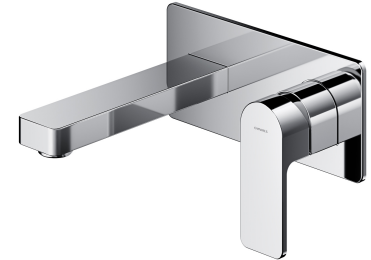
BARETTI | basin mixer for concealed installation

Finish: chrome (CR)

The OMNIRES BARETTI collection stands out with intriguing shapes of the body based on right angles and curves. This modern and harmonious form marvels with perfectly defined details.

Made of high grade brass, the mixer is equipped with a superior quality ceramic cartridge. Innovative technological solutions reduce water consumption by 50% while offering comfort and ease of use.

Chrome is a versatile finishing in a silvery colour, with the perfectly even and lustrous surface.



Design: Dominika Drezner-Ilczuk

Certificates: Polish Declaration of Performance (B marking), Polish Hygienic Certificate PZH

Technologies



The mixer is equipped with the highest quality ceramic cartridge which ensures smooth and precise water flow control whilst guaranteeing long term product performance.



The ECO WATER technology minimizes environmental footprint by reducing the water consumption by approx. 50%, without compromising on the overall product experience.



Thanks to the AIR WATER technology, the water is soft and pleasant to the touch. The stream does not spray and it is quiet and consistent, even if any variations in water pressure occur.



The product is coated using the advanced electroplating technology which guarantees durability, offers good resistance to mechanical damage and facilitates cleaning.



The mixer's body is made of high quality A-grade brass.

Flow characteristics

- water flow at 3 bar: 8.39 l/min
- hot water supply: max. 90 °C
- working pressure 1-5 bar
- noise class: II

Specification

- rosette dimensions: 20 x 9 cm
- spout reach: 17 cm
- minimum wall depth: 5 cm
- water-saving aerator (6 l/min.)
- built-in parts included

