

## VALENCIA M+ | back to wall bath, 158 x 86 cm

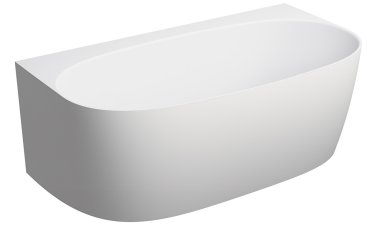
---

### Finish: matt white (BM)

The OMNIRES VALENCIA bath combines the elegant lightness with practical use. A fine structure with a regular profile and subtle edges is adapted for the installation against the wall. This helps achieve the effect of a freestanding bath while fully using the available space. Since the drain in this model is located in the centre two people can comfortably take a bath.

The bath is made of a composite material (M+) whose main component is dolomite rock. The innovative production technology guarantees impeccable execution of every detail while ensuring remarkable durability and resistance.

The silky-smooth matt surface of the bath has a finish in classic white.



## Technologies

---



The product is made of an innovative composite material, M+, which is exceptionally durable, as well as resistant to damage, pressure and extreme temperatures.



The material provides highly desirable, precise finishing. Product surface is perfectly smooth and even, and dimensions precisely match the technical drawing (tolerance 0-3 mm).



Perfectly smooth product surface is free from any ruptures of micro openings, where bacteria and germs could grow. It is also easy to clean and maintain.



The product is very pleasant to the touch. The satin finish resembles a smooth stone that has been polished by water.



Product surface is warm to the touch. Water maintains its temperature for longer, both maximising the user experience and saving energy.



Thanks to its high density, M+ composite provides exceptional acoustic absorption. Sound of the falling water is minimised.

## Specification

---

- length: 158 cm
- width: 86 cm
- height: 58 cm
- double-ended bath
- no overflow
- capacity: 346 l
- net weight: 121 kg
- gross weight: 145 kg
- bath waste not included (choose)

