

## AQUAROCK M+ | anti-slip composite shower tray, 80 x 80 cm

### Finish: matt olive (OL)

Shower tray from the OMNIRES AQUAROCK collection captivates with their minimalist, refined form that ensures functionality. With its fine sand texture, the shower tray's matt surface guarantees the highest slip resistance rating and an increased safety level even when wet. The accurately contoured shape ensures optimum water drainage, and the matching waste cover discreetly covers the waste to complete the look.

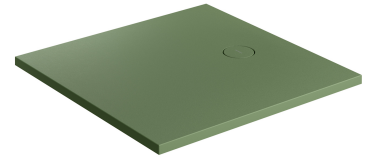
Thanks to innovative production technology, the shower tray has a lower weight, while the durability of the composite material is combined with ease of transport and installation. The tray can be installed on top of the floor surface, flush with the floor, or on shower tray legs. It can also be cut to fit an irregular area.

The shower tray is made of a composite material M+ whose main component is dolomite rock. The innovative production technology guarantees impeccable execution of every detail while ensuring remarkable durability and resistance.

AQUAROCK in olive (RAL6003) is characterised by an expressive hue of deep green and a non-slip, matt surface.

Design: Paulina Shacalis, OMNIRES Studio

Certificates: European Declaration of Performance (CE marking), Polish Hygienic Certificate PZH



## Technologies



The matt ANTI SLIP surface of the shower tray guarantees the highest slip resistance rating (C) and an enhanced level of safety even when wet.



Perfectly smooth product surface is free from any ruptures of micro openings, where bacteria and germs could grow. It is also easy to clean and maintain.



The product effectively muffles the sound of the falling water reducing it by 40%.



Rozwiązanie EASY CUT pozwala na przycięcie brodzika i dostosowanie jego kształtu do wymiarów przestrzeni w łazience.



The product is made of an innovative composite material, M+, which is exceptionally durable, as well as resistant to damage, pressure and extreme temperatures.



Thanks to the modern construction and high quality materials, shower trays keep their heat for longer.



Thanks to LIGHT FORM production technology, the weight of the shower tray is 15% lower than that of standard composite shower trays, which makes transport and installation easier.



Thanks to the EASY MOUNT system, the shower tray may be installed drill-free; on top of the bathroom floor, flush with the tiles or on legs.

## Specification

---

- side 1: 80 cm
- side 2: 80 cm
- height: 3.4 cm
- waste: ø5.2 cm
- anti-slip surface with slip resistance rating C (in accordance with DIN 51097)
- waste cover included in the set
- with shower tray waste
- can be installed on the floor, flush with the floor or on legs (NMB1NA)
- possibility to cut the shower tray in accordance with the guidelines provided in the Installation and Maintenance Instructions

## Product care

---

### How to protect and clean composite and ceramic products?

Products made from M+ composite material and ceramics should be cleaned regularly, preferably after each use, so as to prevent the build-up of hard-to-remove dirt. For daily maintenance of external surfaces, use a soft cloth (for example, a microfibre cloth) and a solution of water with a mild cleaning agent with a natural composition, then rinse the product thoroughly with clean water and wipe it dry. It is not recommended to use rough or abrasive materials and corrosive or bleaching substances to prevent damaging the surface of the product.

For more stubborn dirt, use a 10% citric acid solution with water. Apply the solution to the product for 2 to 3 minutes. After that time, rinse the product thoroughly with clean water and wipe it dry. If necessary, the process can be repeated. Residues from hair dye, lipstick or other products with a dyeing effect should be removed from the surface immediately to prevent the formation of permanent marks.

### How to properly clean a shower tray?

Shower trays should be cleaned regularly, preferably after each use, so as to prevent the build-up of hard-to-remove dirt. For daily maintenance of surfaces, use a soft cloth (for example, a microfibre cloth) and a solution of water with a mild cleaning agent with a natural composition. After cleaning the shower tray, rinse it thoroughly with clean water and wipe it dry. It is not recommended to use rough or abrasive materials and corrosive or bleaching substances to prevent damaging the surface of the product.

For more stubborn dirt, use a 10% citric acid solution with water. Apply the solution to the product for 2 to 3 minutes. After that time, rinse the product thoroughly with clean water and wipe it dry. If necessary, the process can be repeated. Residues from hair dye, lipstick or other products with a dyeing effect should be removed from the surface immediately to prevent the formation of permanent marks.

