

## FRESH | 4-hole bath mixer

---

### Finish: chrome (CR)

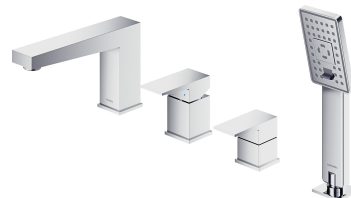
The OMNIRES FRESH collection constitutes the essence of minimalism. The design, inspired primarily by architecture, is based on structures with distinctive contours. The collection marvels with precisely defined edges, responsible for its unique, distinctive look.

Made of high grade brass, the mixer is equipped with a superior quality ceramic cartridge.

Chrome is a versatile finishing in a silvery colour, with the perfectly even and lustrous surface.

Design: Martin Yong

Certificates: Polish Declaration of Performance (B marking), Polish Hygienic Certificate PZH



## Technologies

---



The mixer is equipped with the highest quality ceramic cartridge which ensures smooth and precise water flow control whilst guaranteeing long term product performance.



Bath mixers with the integrated SMART FIX system allow for the shower hose to be easily replaced, if desired, without the need to dismount the bath.



The EASY CLEAN nozzles allow the user to easily remove any limescale build up by simply wiping their silicone surface.



The product is coated using the advanced electroplating technology which guarantees durability, offers good resistance to mechanical damage and facilitates cleaning.



The mixer's body is made of high quality A-grade brass.



Dziesięć lat gwarancji na szczelność korpusu w bateriach łazienkowych.

## Flow characteristics

---

- water flow at 3 bar: 20 l/min
- hot water supply: max. 90 °C
- working pressure 1-6 bar

## Specification

---

- spout reach: 17.5 cm
- water outflow height: 11.2 cm
- hand shower, 3-function, streams: rain, whip, mixed
- stainless steel flexible shower hose, length: 150 cm

