

CONTOUR



CONTOUR is a luxury bathroom fittings collection distinguished by a strong architectural form, tactile textures, and the use of innovative technologies that guarantee enhanced functionality and remarkable durability.

The collection has won several prestigious design and innovation awards, including: Red Dot Design Award, Must Have and Dobry Wzór. Designed by: Paulina Shacalis, OMNIREs Studio.



reddot winner 2022



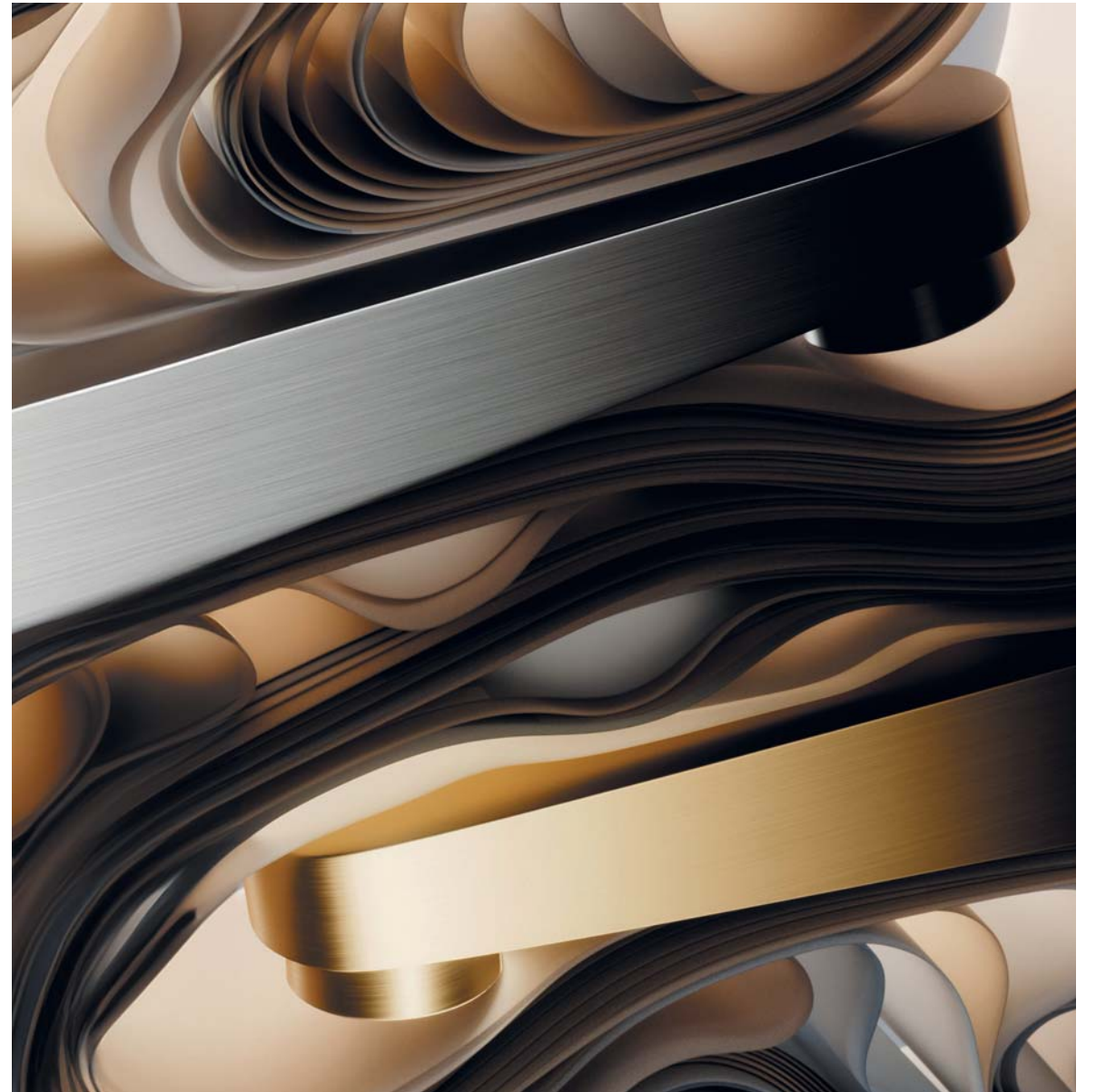
OPULENCE IN TEXTURE



The collection achieves luxurious tactility through pleasant jewel-like details. Diamond-cut milling provides comfortable ergonomics and a good grip while embellishing the clean cylindrical forms. To ensure optimal functionality, hot and cold water are clearly marked, guaranteeing fully intuitive operation.

CONTOUR

The brushed finishes of gold, copper, and anthracite have been engineered to add depth to the products and create richness. In response to touch, the surfaces temporarily acquire a natural patina effect, giving bathroom fittings an organic feel, whilst ensuring the highest durability offered by PVD technology.



PRODUCT INNOVATIONS

The design of each product has been carefully considered to ensure the highest functionality and complete visual harmony. The bath mixer comprises a centrally positioned spout and four cylindrical elements that hold different functions.



CONTOUR



The mixer's symmetrical form has been developed to perfectly complement the bath, creating a well-considered harmonious composition. The concealed installation guarantees economy of space and ease of cleaning.



Made of high-grade brass, the collection features exceptional durability and corrosion resistance. As the final production step, each product is hand brushed or polished with superior craftsmanship and attention to detail.



All mixers are equipped with superior quality ceramic or thermostatic cartridges that ensure smooth and precise water flow control whilst guaranteeing long-term product performance.



The **ECO WATER** technology minimises the environmental footprint by reducing water consumption (approx. 50%), without compromising on the overall product experience.



Thanks to the **AIR WATER** technology, the water across all products is soft and pleasant to the touch. The stream does not spray and it is quiet and steady, even in the event of variations in water pressure.



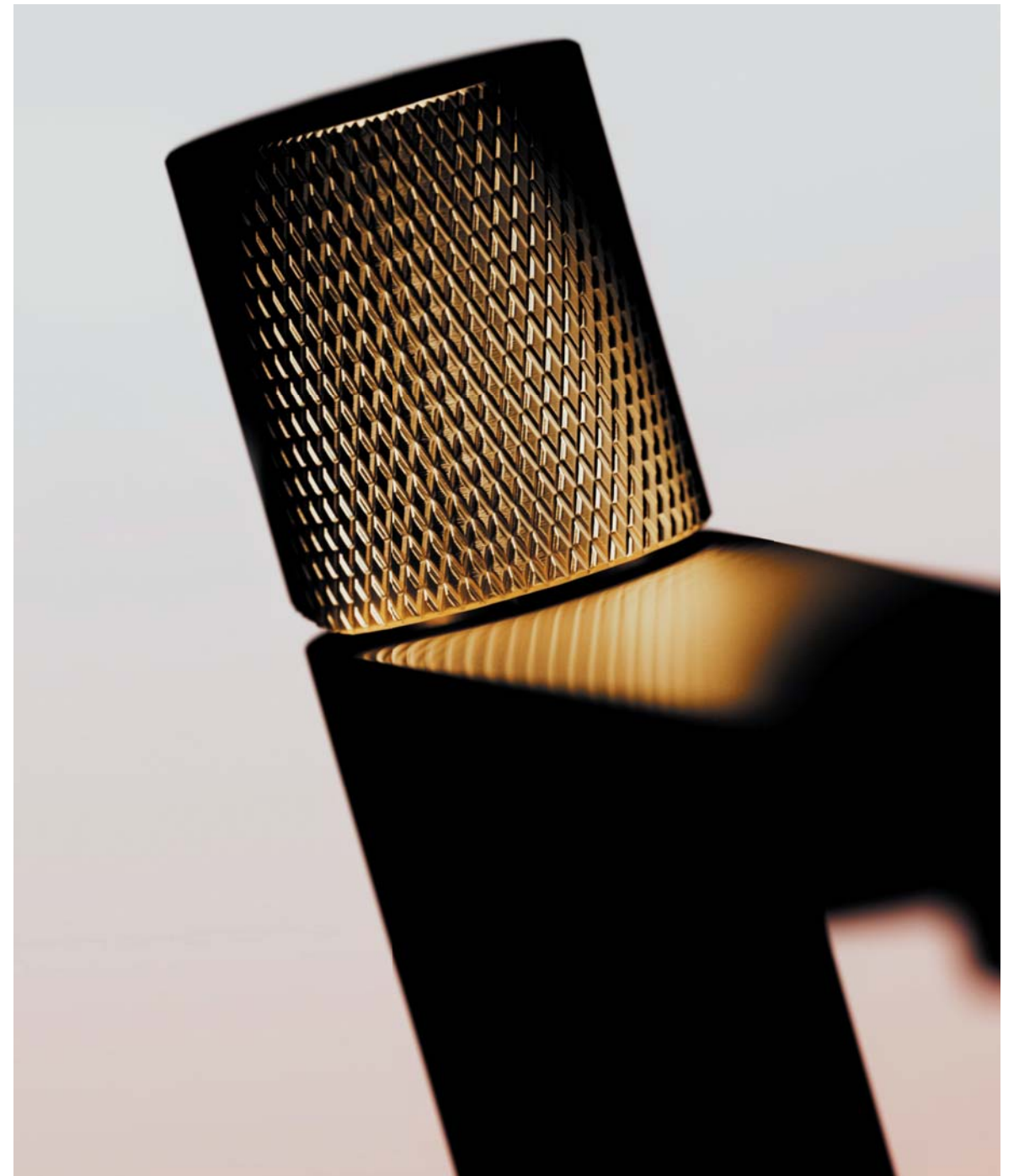
Shower heads are made using the **ANTI-SCALE** technology. Occasional tilting of the shower head, so that any stagnant water can be expelled through the nozzles, guarantees long-term performance.

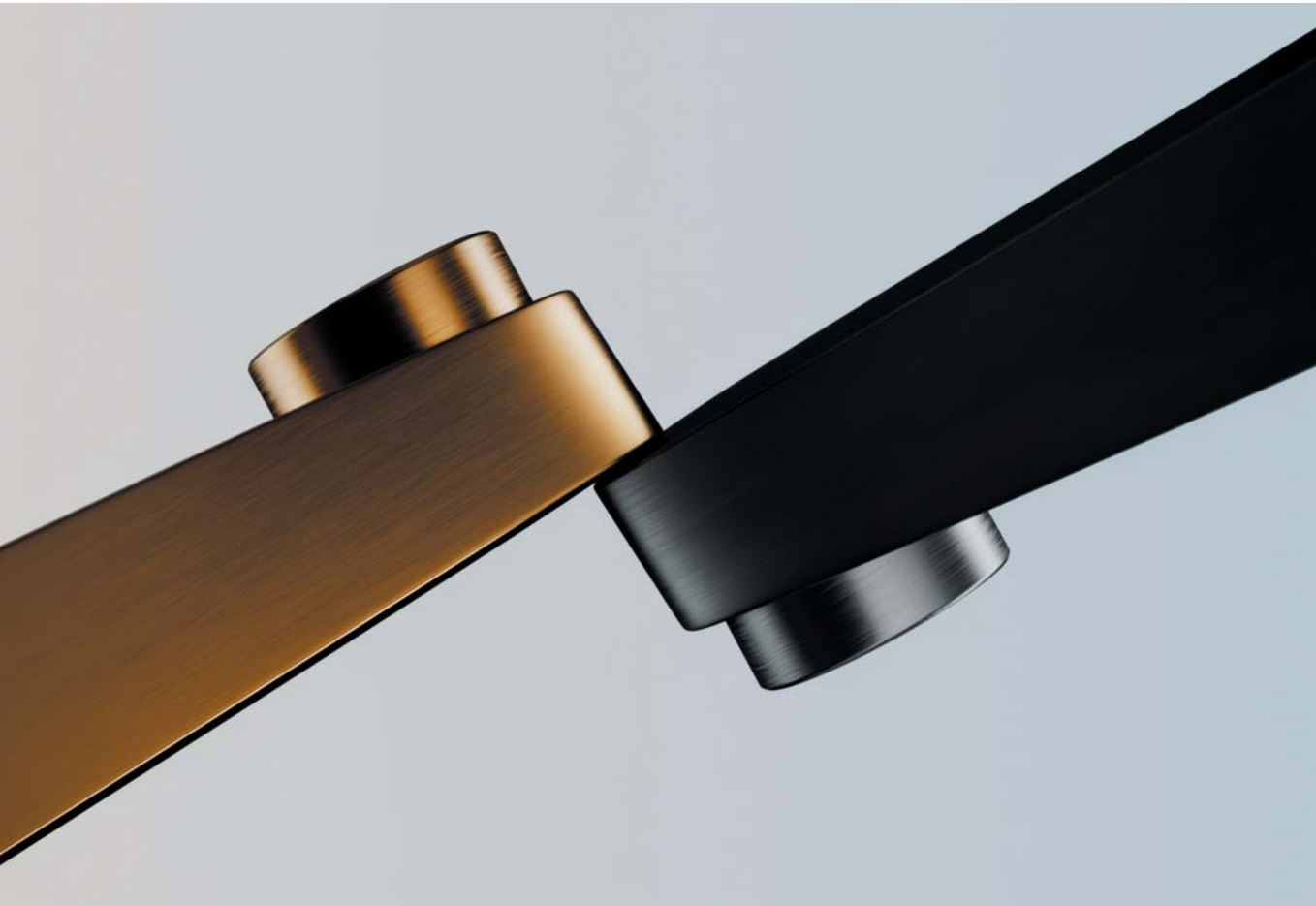


EASY CLEAN aerators and silicone nozzles (implemented across shower heads and hand showers) allow the user to easily remove any limescale simply through wiping the silicone surface.



PVD technology utilised across the brushed gold, the brushed copper and the brushed anthracite colour finishes guarantees the highest possible durability (scratch resistance) and facilitates cleaning.





OMNIREES CONTOUR is a complete fittings collection comprising basin, bath, shower and bidet mixers, as well as relevant systems intended for concealed and exposed installation.

The product family is available in four colour finishes: brushed gold PVD, brushed copper PVD, brushed anthracite PVD and chrome.



Basin mixer
CT8010GLB



Basin mixer
CT8015GLB



Tall basin mixer
CT8012GLB



Bidet mixer
CT8020GLB



Floor-standing bath mixer
CT8033GLB



5-hole bath mixer
CT8037/1GLB



4-hole bath mixer
CT8032GLB



Bidet system
SYSTBI1GLB



Shower system
SYST10GLB



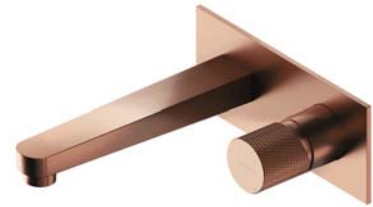
Thermostatic shower system
SYST11GLB



Thermostatic shower system
CT8044GLB



Basin mixer
CT8010CPB



Basin mixer
CT8015CPB



Tall basin mixer
CT8012CPB



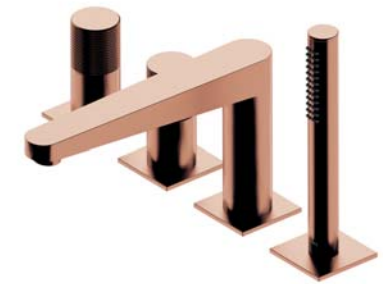
Bidet mixer
CT8020CPB



Floor-standing bath mixer
CT8033CPB



5-hole bath mixer
CT8037/1CPB



4-hole bath mixer
CT8032CPB



Bidet system
SYSTBI1CPB



Shower system
SYST10CPB



Thermostatic shower system
SYST11CPB



Thermostatic shower system
CT8044CPB



Basin mixer
CT8010AT



Basin mixer
CT8015AT



Tall basin mixer
CT8012AT



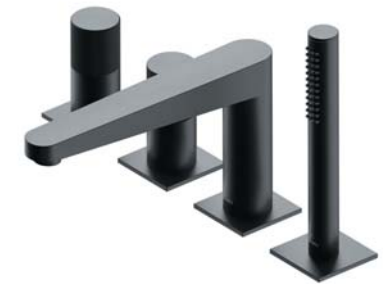
Bidet mixer
CT8020AT



Floor-standing bath mixer
CT8033AT



5-hole bath mixer
CT8037/1AT



4-hole bath mixer
CT8032AT



Bidet system
SYSTBI1AT



Shower system
SYST10AT



Thermostatic shower system
SYST11AT



Thermostatic shower system
CT8044AT

FINISH | CHROME

CONTOUR



Basin mixer
CT8010CR



Basin mixer
CT8015CR



Tall basin mixer
CT8012CR



Bidet mixer
CT8020CR



Floor-standing bath mixer
CT8033CR



5-hole bath mixer
CT8037/1CR



4-hole bath mixer
CT8032CR



Bidet system
SYSTBI1CR

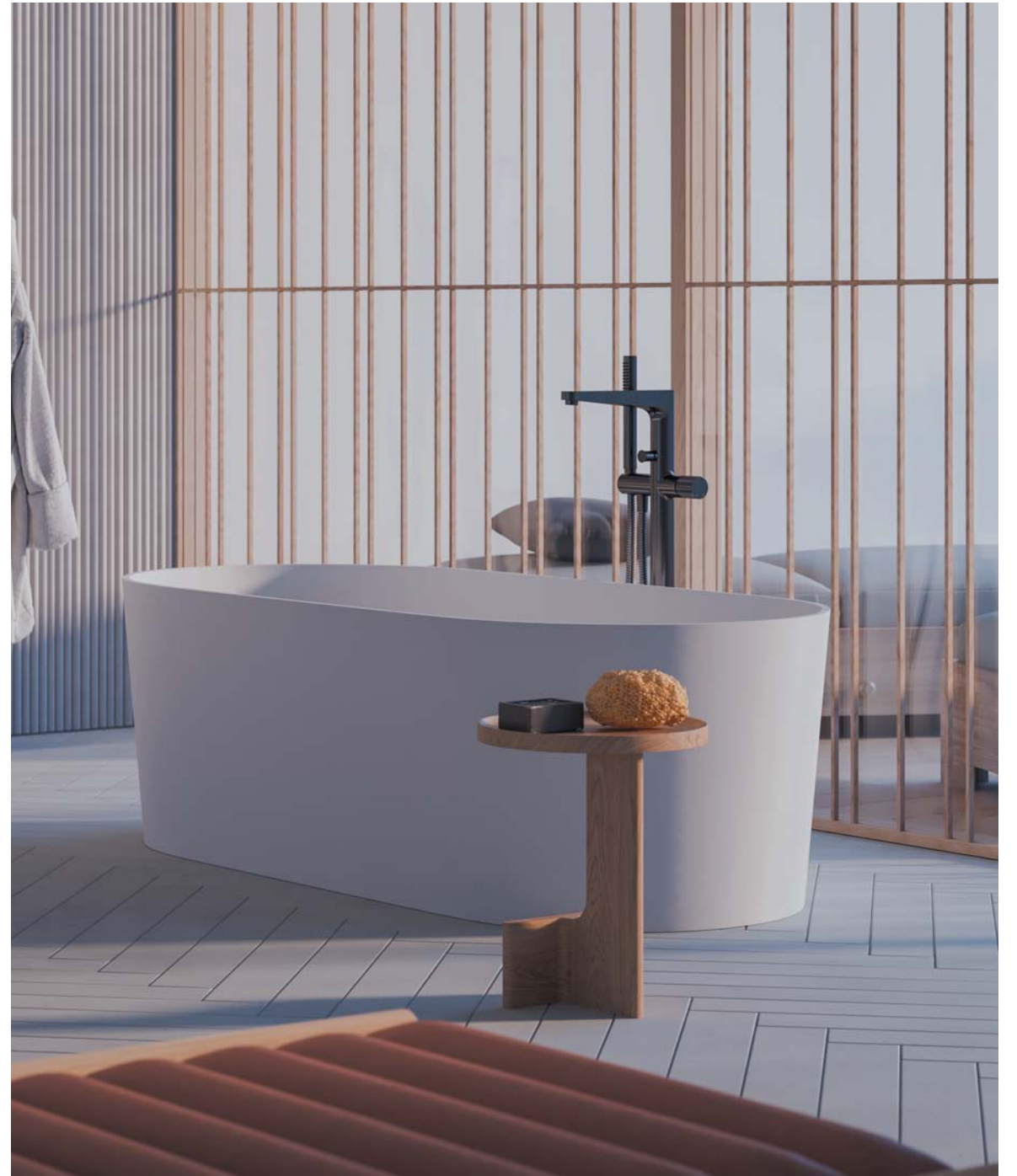
Shower system
SYST10CR



Thermostatic shower system
SYST11CR



Thermostatic shower system
CT8044CR



Since 1990, we have been passionate about creating high-quality products and experiences – to empower others to live in inspiring, well-considered interiors.

We believe that our common responsibility is to strive for sustainable development. That is why we design consciously to minimise our environmental footprint across our products' life span and implement measures that help reduce water and energy consumption. Our products have won numerous design and innovation awards, including: Red Dot Design Award, German Design Award, Must Have award and Dobry Wzór award.



omnires.com/contour

