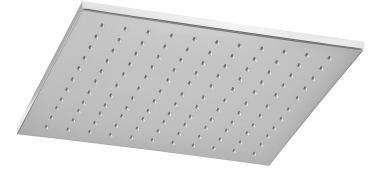


SLIMLINE | shower head, 30 x 30 cm

Finish: chrome (CR)

Shower head internally lined with rubber offering additional protection against damage.

Certificates: Polish Declaration of Performance (B marking), Polish Hygienic Certificate PZH



Technologies



The shower head is made using the ANTI-SCALE technology. It incorporates a silicone insert that prevents internal water stagnation. Occasional tilting of the shower head, so that any stagnant water could flow out through the nozzles, guarantees long term product performance.



The product is coated using the advanced electroplating technology which guarantees durability, offers good resistance to mechanical damage and facilitates cleaning.



The EASY CLEAN nozzles allow the user to easily remove any limescale build up by simply wiping their silicone surface.



The product is made of high quality A-grade brass.

Flow characteristics

- water flow at 3 bar: 22 l/min
- working pressure 1-5 bar
- noise class: U

Specification

- brass
- dimensions: 30 x 30 cm, thickness: 0.9 cm
- 1-function
- 1/2" water connection
- flow rate: ~22 l/min.

