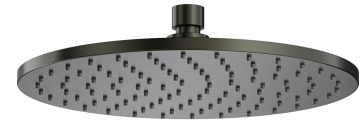


## SLIMLINE | shower head, ø25 cm

---

Finish: brushed anthracite (AT)

Shower head internally lined with rubber offering additional protection against damage.



## Technologies

---



The shower head is made using the ANTI-SCALE technology. It incorporates a silicone insert that prevents internal water stagnation. Occasional tilting of the shower head, so that any stagnant water could flow out through the nozzles, guarantees long term product performance.



The product is coated using the advanced PVD technology which guarantees the highest possible durability and facilitates cleaning.



The EASY CLEAN nozzles allow the user to easily remove any limescale build up by simply wiping their silicone surface.



The product is made of high quality A-grade brass.

## Flow characteristics

---

- water flow at 3 bar: 22 l/min
- working pressure 1-5 bar

## Specification

---

- brass
- dimensions:  $\varnothing 25$  cm, thickness: 0.9 cm
- 1-function
- 1/2" water connection
- flow rate:  $\sim 22$  l/min.

