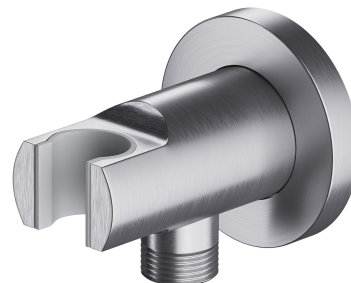


SHOWER ELBOW | shower elbow

Finish: brushed nickel (NI)



Technologies



The product is coated using the advanced PVD technology which guarantees the highest possible durability and facilitates cleaning.



The product is made of high quality A-grade brass.

Flow characteristics

- working pressure 1-5 bar

Specification

- brass
- with a hand shower bracket
- rosette dimensions: $\varnothing 6$ cm, distance from the wall: 7 cm
- protective insert

