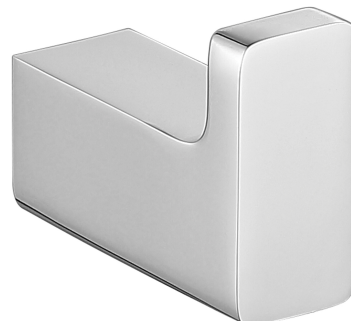


NELSON | hook

Finish: chrome (CR)

NELSON accessories collection stands out thanks to its modern geometric form and a friendly and gentle line. The design is based on right angles, softened with a streamlined shape of gently rounded edges.

Chrome is a versatile finishing in a silvery colour, with the perfectly even and lustrous surface.



Technologies



The product is coated using the advanced electroplating technology which guarantees durability, offers good resistance to mechanical damage and facilitates cleaning.



The product is made of high quality A-grade brass.

Specification

- brass
- width: 2 cm
- height: 3 cm
- distance from the wall: 4 cm

