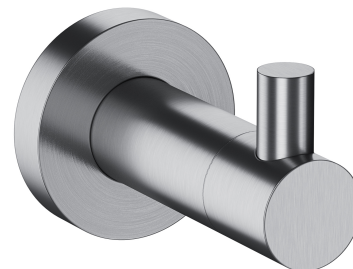


MODERN PROJECT | hook

Finish: brushed nickel (NI)

MODERN PROJECT accessories collection has a solid clean form and minimalist design. The perfectly defined, circle-based shapes give the collection a timeless and modern look.

Nickel is an industrial finishing in a silvery colour, with a satin, brushed surface.



Technologies



The product is made of high quality A-grade brass.

Specification

- brass
- width: 4 cm, height: 5 cm, distance from the wall: 6 cm

