

## OVO M+ | freestanding bath with overflow, 160 x 75 cm

### Finish: matt midnight blue (MB)

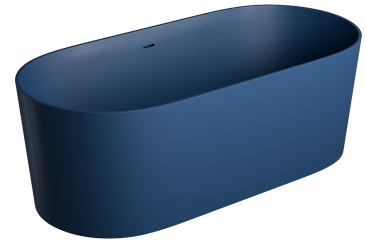
The expressive silhouette of the OMNIRES OVO freestanding bath features impeccable proportions. Tying with geometrical shapes gave rise to a design based on two semicircles. The almost vertical outer walls end in a flat edge highlighting the bath's bold design. The inner profile of the bath comfortably supports the back, while the wide bottom offers ample space. The bath's recessed setting is ideal for bathing children and makes getting in and out of the bath much easier. It features functional solutions such as a perfectly matching click-clack waste bath trap and a centrally located waste, which makes the bath ideal for shared moments of relaxation. A discreet overflow integrated into the inner wall of the bathtub prevents water from rising above the rim, protecting the bathroom from flooding.

The bath is made of a composite material M+ whose main component is dolomite rock. The innovative production technology guarantees impeccable execution of every detail while ensuring remarkable durability and resistance.

OVO bath in midnight blue (RAL5003) has a velvety matt surface in an expressive navy blue hue.

Design: Paulina Shacalis, OMNIRES Studio

Awards: Red Dot Design Award, German Design Award, Design Plus powered by ISH 2023, Must Have, Dobry Wzór



## Technologies



The product is made of an innovative composite material, M+, which is exceptionally durable, as well as resistant to damage, pressure and extreme temperatures.



The material provides highly desirable, precise finishing. Product surface is perfectly smooth and even, and dimensions precisely match the technical drawing (tolerance 0-3 mm).



Perfectly smooth product surface is free from any ruptures of micro openings, where bacteria and germs could grow. It is also easy to clean and maintain.



The product is very pleasant to the touch. The satin finish resembles a smooth stone that has been polished by water.



Product surface is warm to the touch. Water maintains its temperature for longer, both maximising the user experience and saving energy.



Thanks to its high density, M+ composite provides exceptional acoustic absorption. Sound of the falling water is minimised.

## Specification

- length: 160 cm
- width: 75 cm
- height: 53.5 cm
- double-ended bath
- with overflow
- click-clack bath waste included
- capacity: 352 l
- net weight: 149 kg
- gross weight: 179 kg
- for installation, an opening must be made in the floor in order to install the siphon

## Product care

---

### How to protect and clean composite and ceramic products?

Products made from M+ composite material and ceramics should be cleaned regularly, preferably after each use, so as to prevent the build-up of hard-to-remove dirt. For daily maintenance of external surfaces, use a soft cloth (for example, a microfibre cloth) and a solution of water with a mild cleaning agent with a natural composition, then rinse the product thoroughly with clean water and wipe it dry. It is not recommended to use rough or abrasive materials and corrosive or bleaching substances to prevent damaging the surface of the product.

For more stubborn dirt, use a 10% citric acid solution with water. Apply the solution to the product for 2 to 3 minutes. After that time, rinse the product thoroughly with clean water and wipe it dry. If necessary, the process can be repeated. Residues from hair dye, lipstick or other products with a dyeing effect should be removed from the surface immediately to prevent the formation of permanent marks.

