

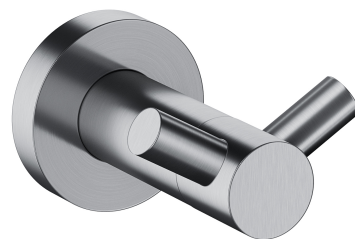
## MODERN PROJECT | double hook

---

Finish: brushed nickel (NI)

MODERN PROJECT accessories collection has a solid clean form and minimalist design. The perfectly defined, circle-based shapes give the collection a timeless and modern look.

Nickel is an industrial finishing in a silvery colour, with a satin, brushed surface. The product is coated using the advanced PVD technology.



## Technologies

---



The product is coated using the advanced PVD technology which guarantees the highest possible durability and facilitates cleaning.



The product is made of high quality A-grade brass.

## Specification

---

- brass
- width: 6 cm, height: 4 cm, distance from the wall: 7 cm

