

OVO M+ | countertop/wall-mounted basin - left, 55 x 36 cm

Finish: matt coral (CO)

The basin from the OMNIRES OVO collection is distinguished by its minimalist and expressive silhouette with impeccable proportions. The design, born from a playful approach to geometry, combines two opposing semicircles of the bowl with a rectangular, functional shelf – an ideal space for installing the mixer as well as for placing cosmetics or other everyday essentials. The harmoniously contoured walls end in a flat edge that accentuates the basin's shape, while the perfectly matching waste cover guarantees a flawless aesthetic. A discreet, factory-made undercut point on the underside indicates where a hole for the mixer can be cut.

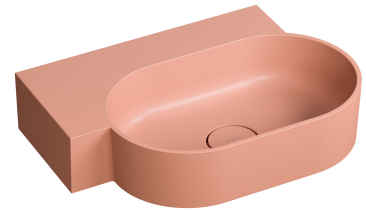
The meticulously refined shape of the basin, with perfectly finished sides, ensures complete freedom of installation and a flawless appearance in any setting. The basin can be mounted anywhere on the wall as a wall-hung model, delivering an aesthetically pleasing result regardless of its placement. It is equally suitable for corner installation, where its shape and integrated shelf offer practical use. When placed on a countertop, it emphasizes the character and unique style of the interior. Its compact dimensions make it an excellent choice for smaller spaces.

The basin is made of a composite material M+ whose main component is dolomite rock. The innovative production technology guarantees impeccable execution of every detail while ensuring remarkable durability and resistance.

OVO basin in coral colour (RAL3012) has a subtle hue and a velvety matt surface.

Design: Paulina Shacalis, OMNIRES Studio

Awards: Red Dot Design Award, German Design Award, Design Plus powered by ISH 2023, Must Have, Dobry Wzór



Technologies



The product is made of an innovative composite material, M+, which is exceptionally durable, as well as resistant to damage, pressure and extreme temperatures.



The material provides highly desirable, precise finishing. Product surface is perfectly smooth and even, and dimensions precisely match the technical drawing (tolerance 0-3 mm).



Perfectly smooth product surface is free from any ruptures of micro openings, where bacteria and germs could grow. It is also easy to clean and maintain.



The product is very pleasant to the touch. The satin finish resembles a smooth stone that has been polished by water.



Product surface is warm to the touch. Water maintains its temperature for longer, both maximising the user experience and saving energy.



Thanks to its high density, M+ composite provides exceptional acoustic absorption. Sound of the falling water is minimised.

Specification

- outside length: 55.5 cm
- outside width: 38.5 cm
- height: 14.7 cm
- depth: 10.6 cm
- no overflow
- drain cover included
- basin waste not included (A47CR)
- capacity: 10.5 l
- net weight: 11.7 kg
- gross weight: 13 kg
- countertop or wall-mounted installation (including corner installation)
- for countertop installation, you must first cut a hole in the countertop with a diameter of 140 mm
- 1 undercut area for mixer installation

Product care

How to protect and clean composite and ceramic products?

Products made from M+ composite material and ceramics should be cleaned regularly, preferably after each use, so as to prevent the build-up of hard-to-remove dirt. For daily maintenance of external surfaces, use a soft cloth (for example, a microfibre cloth) and a solution of water with a mild cleaning agent with a natural composition, then rinse the product thoroughly with clean water and wipe it dry. It is not recommended to use rough or abrasive materials and corrosive or bleaching substances to prevent damaging the surface of the product.

For more stubborn dirt, use a 10% citric acid solution with water. Apply the solution to the product for 2 to 3 minutes. After that time, rinse the product thoroughly with clean water and wipe it dry. If necessary, the process can be repeated. Residues from hair dye, lipstick or other products with a dyeing effect should be removed from the surface immediately to prevent the formation of permanent marks.

