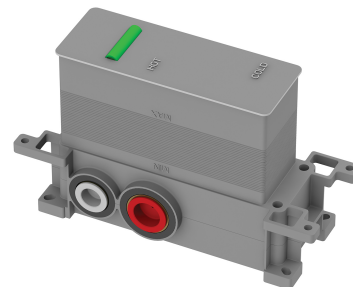


BOX | built-in part for thermostatic 2-way shower/bath mixer

Finish:

The built-in part for thermostatic 2-way shower/bath mixer is equipped with a brass body, high-quality thermostatic cartridge, diverter, and valves with filters. Its advantages include easy installation and a minimum installation depth of just 7 cm. The BOX is designed to be paired with exposed elements Y1236-KROCR, Y1236ROWM, Y1236ROCR, Y1236RONI, Y1236ROGR, Y1236ROCPB, Y1236ROCP, Y1236ROBSB, Y1236ROGL, Y1236ROGLB, Y1236ROBL, FR7136ROCR.

Certificates: Polish Hygienic Certificate PZH



Technologies



The mixer is equipped with the highest quality thermostatic cartridge incorporating a 38°C lock. The cartridge protects against sudden temperature changes and guarantees long term product performance.

Flow characteristics

- water flow at 3 bar: 22 l/min
- hot water supply: max. 90 °C
- working pressure 1-5 bar

Specification

- minimum wall depth: 7 cm
- two 3/4" inlets (hot and cold water)
- two 1/2" mixed water outlets
- with filters and non-return valves
- hot water lock at 38°C
- complementary product to: Y1236-KROCR, Y1236ROWM, Y1236ROCR, Y1236RONI, Y1236ROGR, Y1236ROCPB, Y1236ROCP, Y1236ROBSB, Y1236ROGL, Y1236ROGLB, Y1236ROBL, FR7136ROCR

Product care

How to take care of bathroom and kitchen fittings?

You should clean your bathroom and kitchen fittings regularly, preferably after each use, so as to prevent the build-up of hard-to-remove dirt. For daily maintenance of external surfaces, use a soft cloth (for example, a microfibre cloth) and a solution of water with a mild cleaning agent with a natural composition, then rinse the product thoroughly with clean water and wipe it dry. It is not recommended to use rough or abrasive materials and corrosive or bleaching substances to prevent damaging the surface of the product.

For more stubborn dirt, use a 10% citric acid solution with water. Apply this solution directly to the product or cover the product with a cloth soaked in the solution. After 10 minutes, rinse the product thoroughly with clean water and wipe it dry. If necessary, the process can be repeated.

How to keep thermostatic mixers in optimal condition?

For the thermostatic mixer to operate correctly, run the mixer once every two weeks, spanning the full temperature range – from very cold water to the maximum hot water setting. Repeat the operation several times.

