

## CONTOUR | basin mixer for concealed installation

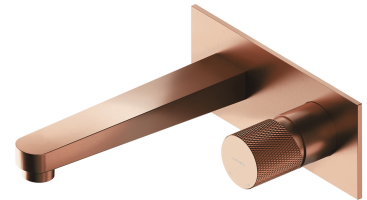
---

### Finish: brushed copper (CPB)

The OMNIRES CONTOUR collection intrigues with its extravagant form and decorative details. An austere, architectural design with a diamond milling marvels with the sophisticated combination of textures and perfect workmanship.

Made of high grade brass, the mixer is equipped with a superior quality ceramic cartridge. Innovative technological solutions reduce water consumption by 50% while offering comfort and ease of use.

Brushed copper is a sophisticated finish with a warm red-brown hue and a satin surface. The product is coated using advanced PVD technology.



Design: Paulina Shacalis, OMNIRES Studio  
Awards: Red Dot Design Award, Must Have  
Distinctions: Dobry Wzór

Certificates: Polish Declaration of Performance (B marking)

## Technologies

---



The mixer is equipped with the highest quality ceramic cartridge which ensures smooth and precise water flow control whilst guaranteeing long term product performance.



The ECO WATER technology minimizes environmental footprint by reducing the water consumption by approx. 50%, without compromising on the overall product experience.



Thanks to the AIR WATER technology, the water is soft and pleasant to the touch. The stream does not spray and it is quiet and consistent, even if any variations in water pressure occur.



The EASY CLEAN aerator allows the user to easily remove any limescale build up by simply wiping its silicone surface.



The product is coated using the advanced PVD technology which guarantees highest possible durability, offers exceptional resistance to damage and facilitates cleaning.



The mixer's body, the valve and the rosette are all made of high quality A-grade brass.

## Flow characteristics

---

- hot water supply: max. 90 °C
- working pressure 1-5 bar
- noise class: I

## Specification

---

- rosette dimensions: 19 x 8 cm
- spout reach: 18.5 cm
- minimum wall depth: 5 cm
- built-in parts included

