

CONTOUR



CONTOUR is a luxury bathroom fittings collection distinguished by a strong architectural form, tactile textures, and the use of innovative technologies that guarantee enhanced functionality and durability.

The collection has won several prestigious design and innovation awards, including: Red Dot Design Award, Must Have and Dobry Wzór (Good Design).
Designed by: Paulina Shacalis, OMNIRE Studio.



reddot winner 2022





The collection achieves luxurious tactility through pleasant jewel-like details. The precise diamond-cut milling additionally provides comfortable ergonomics and good grip while embellishing the clean cylindrical forms of the fitting. To ensure optimal functionality, hot and cold water is clearly marked, guaranteeing fully intuitive operation.

Across brushed gold and brushed anthracite product lines, the product surface finish has been engineered to add depth and create richness. Brushed surfaces react to the touch to create a natural patina-effect, giving bathroom fittings an organic sensibility, whilst ensuring the highest durability offered by PVD technology.



The design of each product has been carefully considered to ensure both the highest functionality and complete visual harmony. The bath mixer comprises a centrally positioned spout and four cylindrical elements that hold different functions.



The mixer's symmetrical form has been developed to perfectly complement the bath, creating a well-considered harmonious composition. The concealed installation guarantees economy of space and ease of cleaning.



All products are made of high-grade brass, ensuring the collection is exceptionally durable and anti-corrosive. As the final production step, every product is hand brushed or polished with the highest levels of craftsmanship and a great attention to detail.



All mixers are equipped with superior quality ceramic or thermostatic cartridges that ensure smooth and precise water flow control whilst guaranteeing long-term product performance.



The **ECO WATER** technology minimises the environmental footprint by reducing water consumption (approx. 50%), without compromising on the overall product experience.



Thanks to the **AIR WATER** technology, the water across all products is soft and pleasant to the touch. The stream does not spray and it is quiet and steady, even in the event of variations in water pressure.



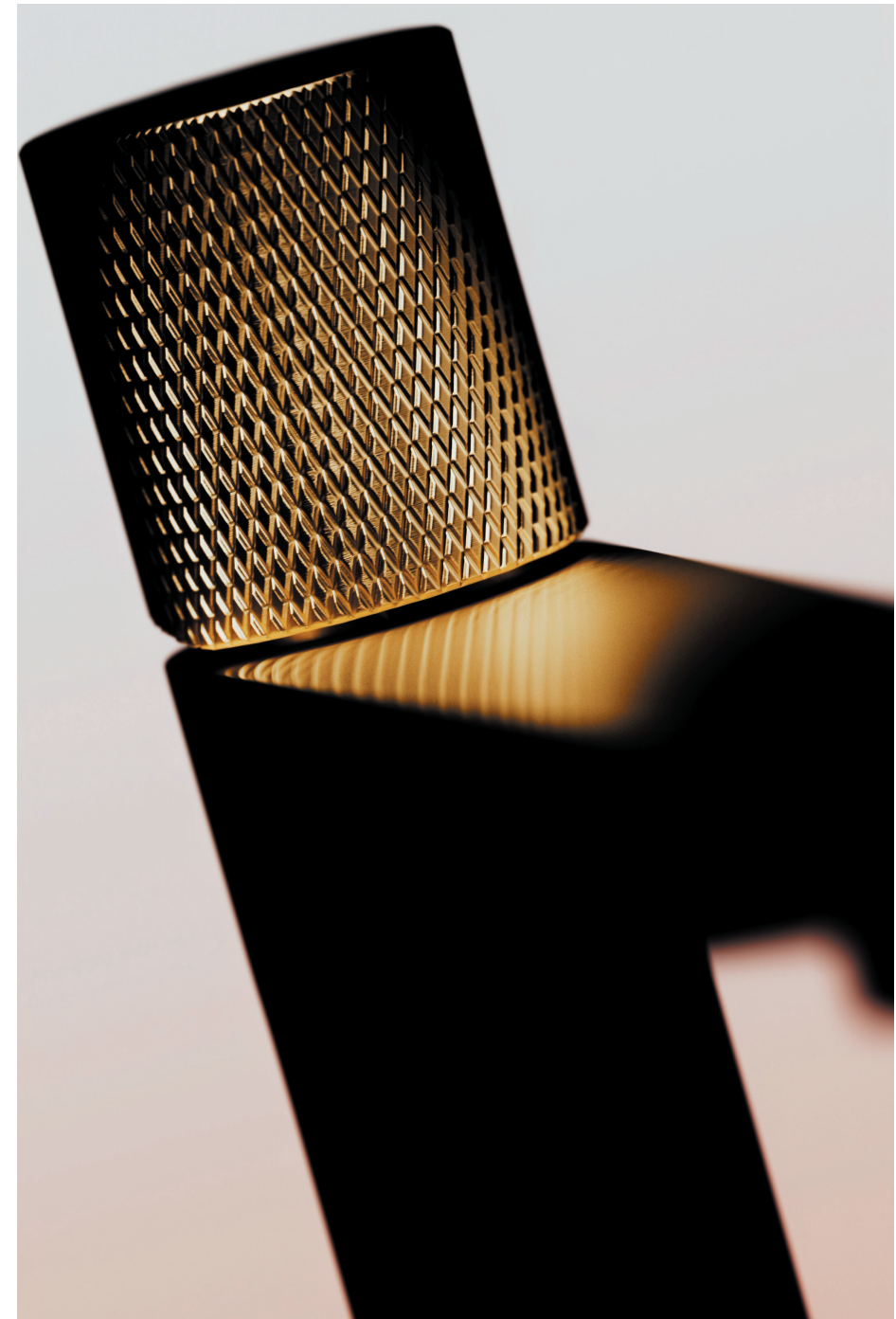
Shower heads are made using the **ANTI-SCALE** technology. Occasional tilting of the shower head, so that any stagnant water can be expelled through the nozzles, guarantees long-term performance.

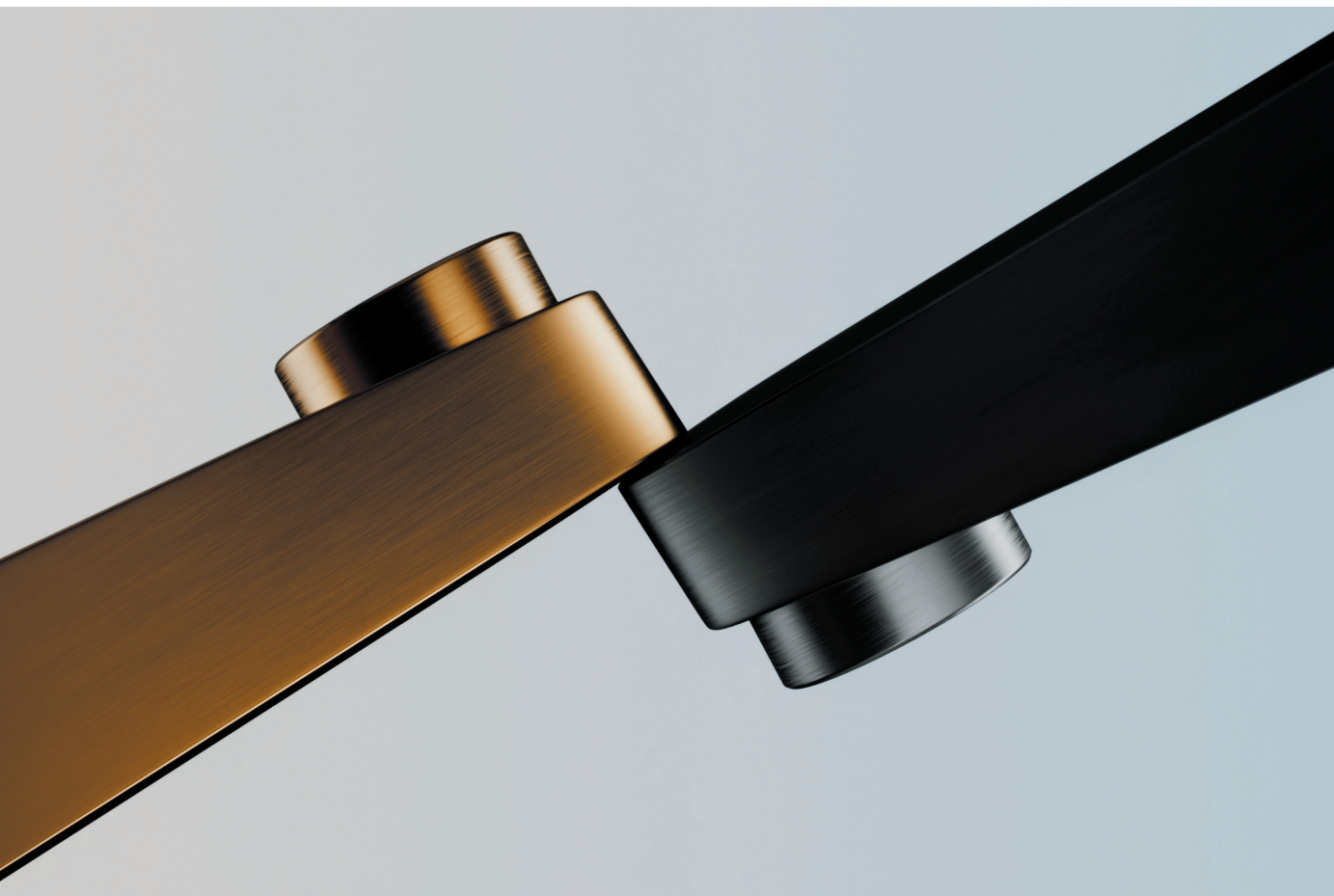


EASY CLEAN aerators and silicone nozzles (implemented across shower heads and hand showers) allow the user to easily remove any limescale.



PVD technology utilised across the brushed gold and the brushed anthracite colour finishes guarantees the highest possible durability (scratch resistance) and facilitates cleaning.



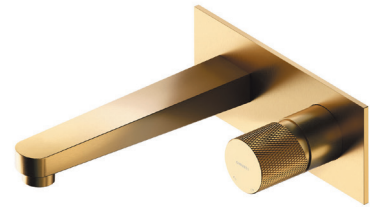


OMNIRES CONTOUR is a complete fittings collection comprising basin, bath, shower and bidet mixers, as well as relevant systems intended for concealed and exposed installation. The product family is available in 3 colour finishes: brushed gold PVD, brushed anthracite PVD and chrome.





CT8010GLB
Basin mixer



CT8015GLB
Basin mixer



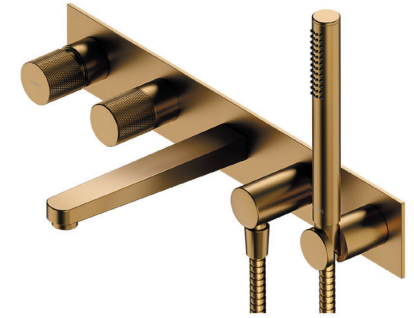
CT8012GLB
Tall basin mixer



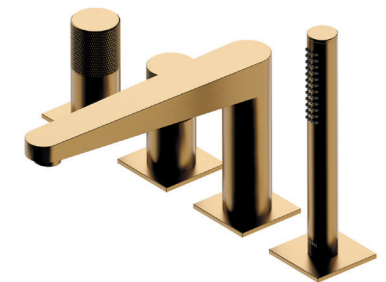
CT8020GLB
Bidet mixer



CT8033GLB
Floor-standing bath mixer



CT8037/1GLB
Bath mixer



CT8032GLB
4-hole bath mixer



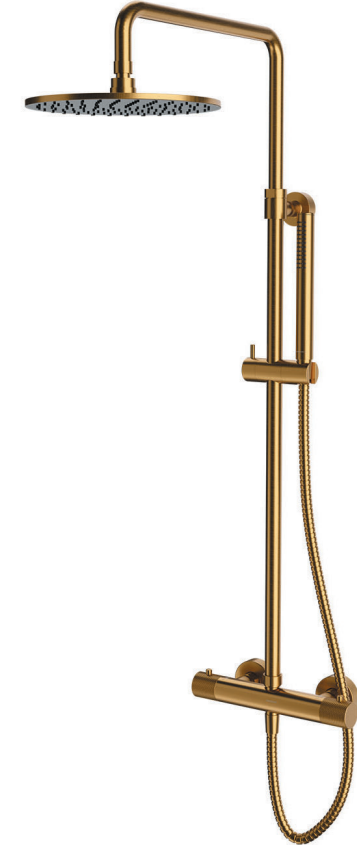
SYSCTB1GLB
Bidet system



SYSCT10GLB
Shower system



SYSCT11GLB
Thermostatic shower system



CT8044GLB
Thermostatic shower system





CT8010AT
Basin mixer



CT8015AT
Basin mixer



CT8012AT
Tall basin mixer



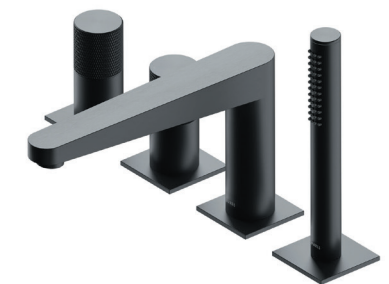
CT8020AT
Bidet mixer



CT8033AT
Floor-standing bath mixer



CT8037/1AT
Bath mixer



CT8032AT
4-hole bath mixer



SYSCTB11AT
Bidet system



SYSCT10AT
Shower system



SYSCT11AT
Thermostatic shower system

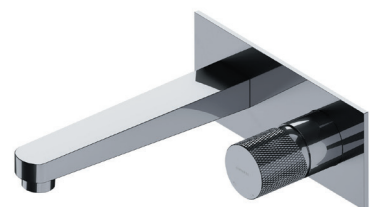


CT8044AT
Thermostatic shower system





CT8010CR
Basin mixer



CT8015CR
Basin mixer



CT8012CR
Tall basin mixer



CT8020CR
Bidet mixer



CT8033CR
Floor-standing bath mixer



CT8037/1CR
Bath mixer



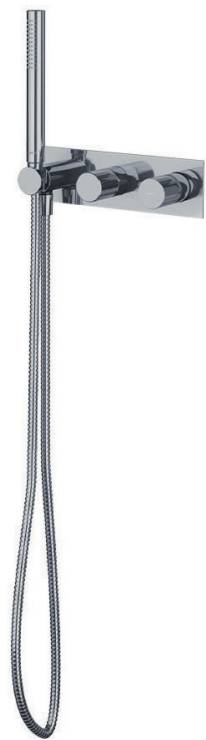
CT8032CR
4-hole bath mixer



SYSCTB11CR
Bidet system



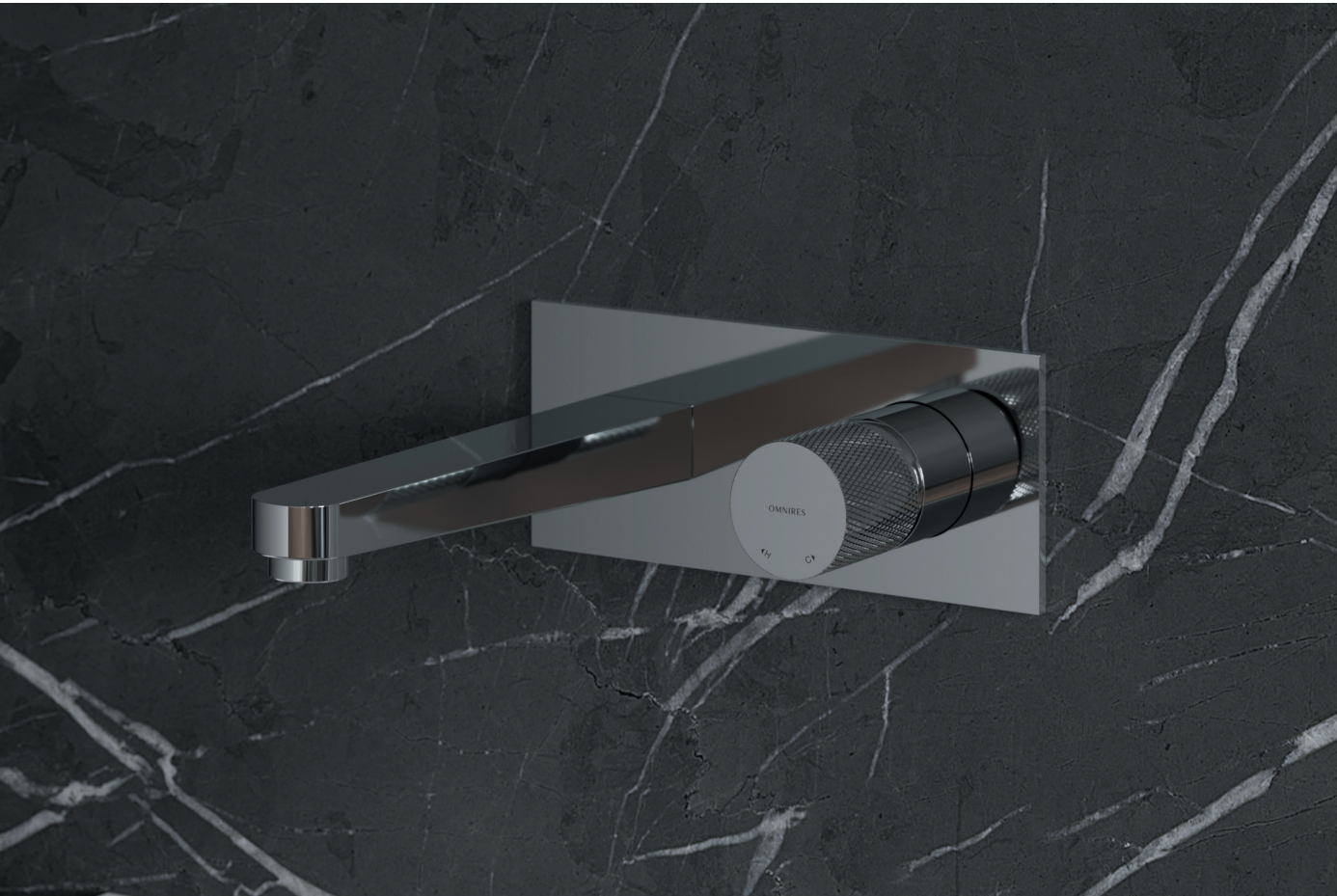
SYSCT10CR
Shower system



SYSCT11CR
Thermostatic shower system



CT8044CR
Thermostatic shower system



Since 1990, we have been passionate about creating high-quality products and experiences – to empower others to live in well-considered, inspiring interiors.

We believe that our common responsibility is to strive for sustainable development. That is why we design consciously to minimise our environmental footprint across our products' life span and implement measures that help reduce water and energy consumption. Our products have won numerous design and innovation awards, including: Red Dot Design Award, German Design Award, iF Design, Top Design, Dobry Wzór (Good Design) and the Must Have award.



omnires.com/contour

